

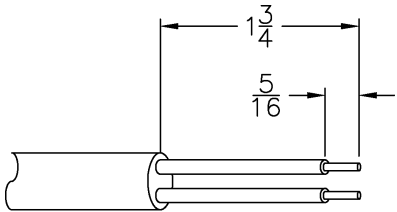


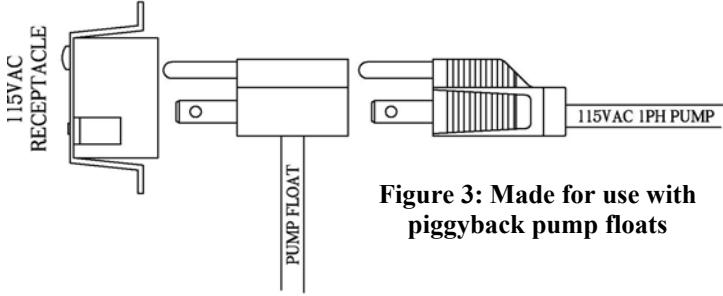
## Alarm Caddy Box – Alarm with Pump Receptacle

<b>⚠ WARNING</b> 	<b>ELECTRICAL SHOCK HAZARD</b> Disconnect power before installing or servicing this product. A qualified service person must install and service this product according to applicable electrical and plumbing codes.	<b>⚠ WARNING</b> 	<b>EXPLOSION OR FIRE HAZARD</b> Do not use this product with flammable liquids. Do not install in hazardous locations as defined by National Electrical Code, ANSI/NFPA 70.
---	---	---	--

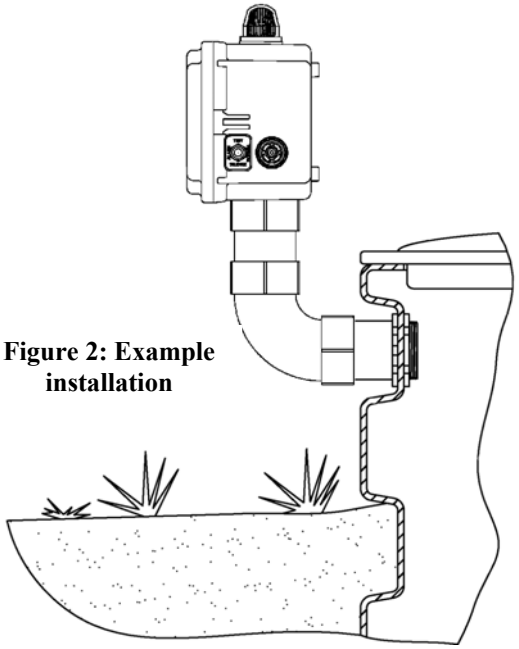
1. Observe National Electric Code, ANSI/NFPA 70, when installing this unit to prevent moisture buildup. SPI is not responsible for damage or injury resulting from improper installation procedure.
2. Turn off power.
3. Drill a 2-3/8" hole in the basin or tank riser for a 2" conduit fitting.
4. Attach the caddy box to the basin or tank riser using standard plumbing fittings and seals.
5. With PVC solvent, weld the conduit into the junction box adapter that is factory installed.
6. String the pump plug, float plug, and alarm float through the 2" conduit. Insert the circular rubber seal with cords positioned in the openings of the seal and washers. If you only need one float, use the included plugs to seal the unused cord position. Strip the high water alarm float and power wires as shown in figure 1. Connect them per the terminal block diagram that is included with your panel.
7. Install power wires and floats according to the terminal block diagrams included with the panel.
8. If you are using a "piggyback" pump float switch, plug the float switch into the pump power receptacle. The pump should then plug into the float switch. If the float switch is built into the pump, you may simply plug in the pump.
9. Turn on power and test the alarm by tilting the alarm float switch. The buzzer and alarm light should switch on. If it does not, try the test button. If the alarm is still not functioning, contact your sales representative or SPI.
10. Test the pump by tilting the pump float. The pump should switch on.



**Figure 1: Recommended strip Lengths (alarm float and power wires)**



**Figure 3: Made for use with piggyback pump floats**



**Figure 2: Example installation**

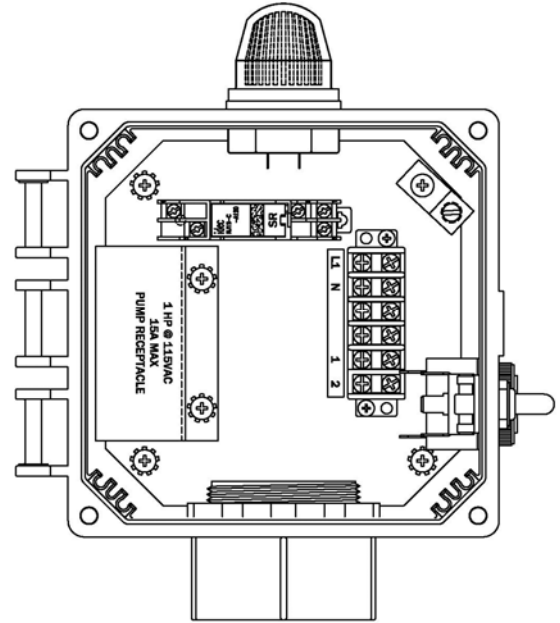


# ALARM SYSTEMS

## Alarm Caddy Box – Alarm with Pump Receptacle

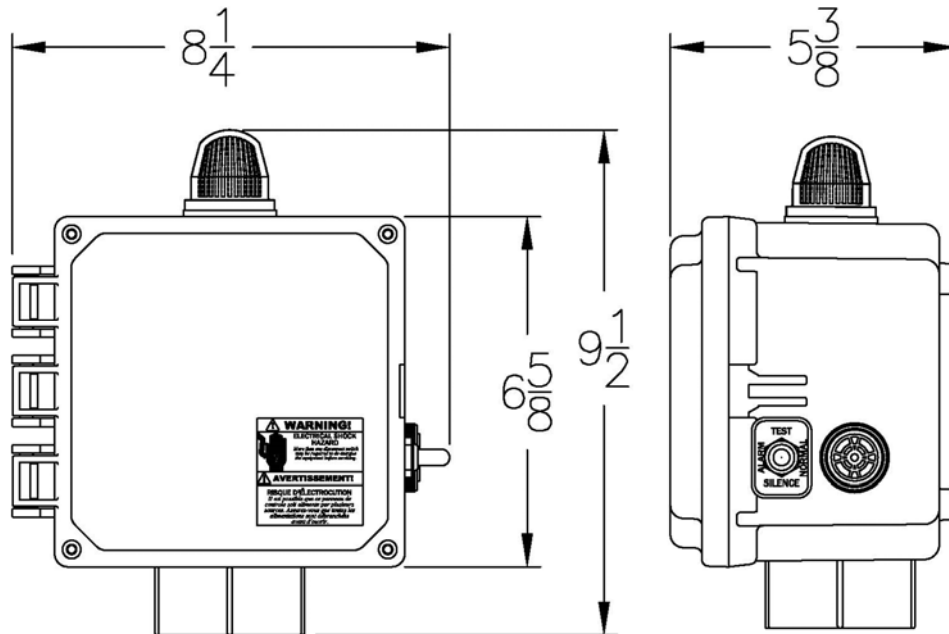
### Features & Benefits

- NEMA 4x Thermoplastic Enclosure
- Large Alarm Condition Indicating Light
- Audible Horn rated 85db @ 10'
- Alarm Test-Normal-Silence switch
- Automatic Alarm Reset
- Supplied with 2" conduit adapter and cord seal
- Includes 15' Mechanical Alarm Float & mounting tie strap
- Suitable for Indoor or Outdoor Use
- Two Year Limited Warranty
- Available in both High Water & Low Level Alarm versions



(Standard 10A650 Shown)

### Dimensions



\*Note: Consult the factory for other available options.