

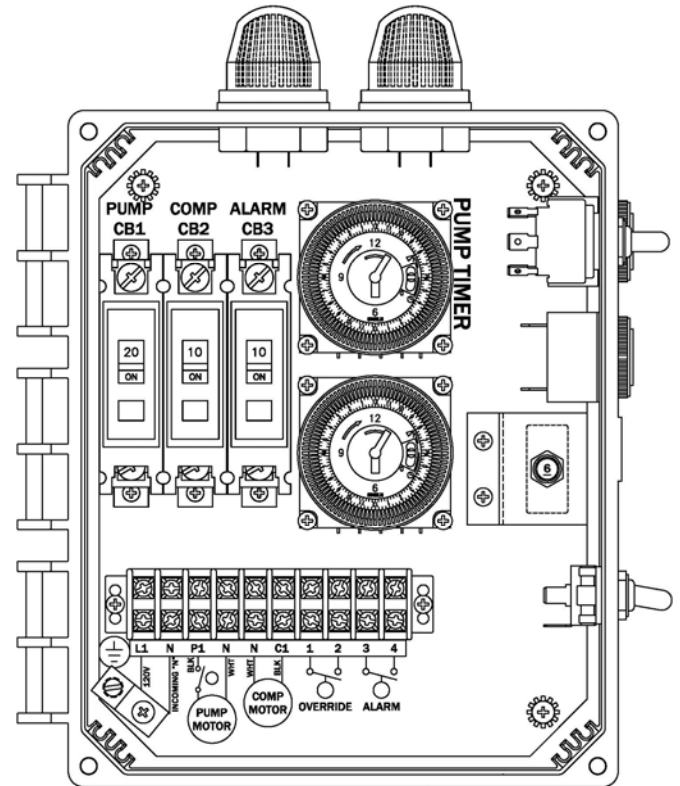


CONTROL PANEL

“50B009-SN-2T” Model Aerobic Control Panel

Features & Benefits

- Circuit Breakers for Pump, Compressor & Alarm Circuits
- 24 Hr Timer w/15 minute intervals
- Large & Easy to Access Terminal Block
- Externally Mounted Run/Mute/Test Switch w/UV resistant sealing boot
- Externally Mounted Audible Alarm
- Rugged UV resistant Externally Mounted Alarm Light
- Durable Weather Resistant Hinged Poly Enclosure
- Silk Screen Back Panel
- Ground Lug
- Easily Replaceable Components
- Nema 4x Rating
- Color Coded Internal Wiring
- Built and Labeled to UL 508A Standard
- Works with most Aerobic Treatment Systems
- Provided with Wiring Schematic and Detailed Connection Diagram for Installer
- Mounting Feet for Enclosure
- Two-year limited control panel warranty



(50B009-SN-2T SHOWN)



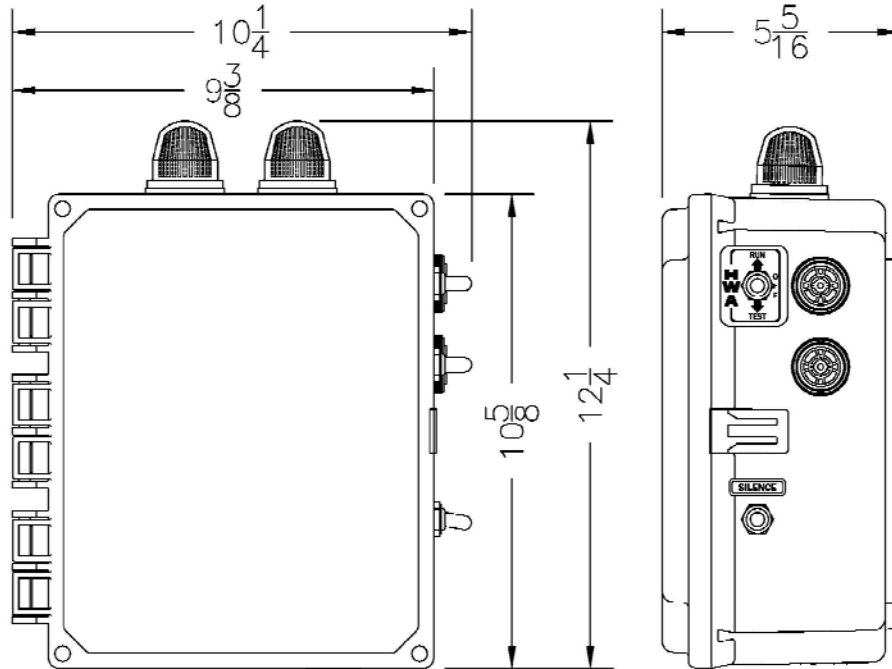
Available Options

- Externally Mounted Pump Test Switch
- Externally Mounted Air Pressure Switch
- Auto-Dialer
- Locking Stainless Steel Latch
- Repeat Cycle Timer Option
- Mercury or Mechanical Float Switches for the Pump and High Water Alarm Circuits

Note: Consult the factory for other available options. Also, some options may require an increase in the enclosure size.

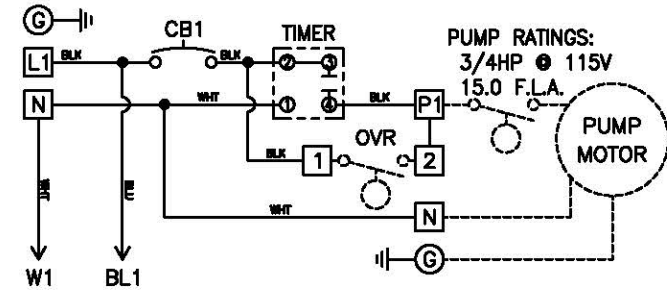
“50B009-SN-2T” Model Aerobic Control Panel

Panel Dimensions

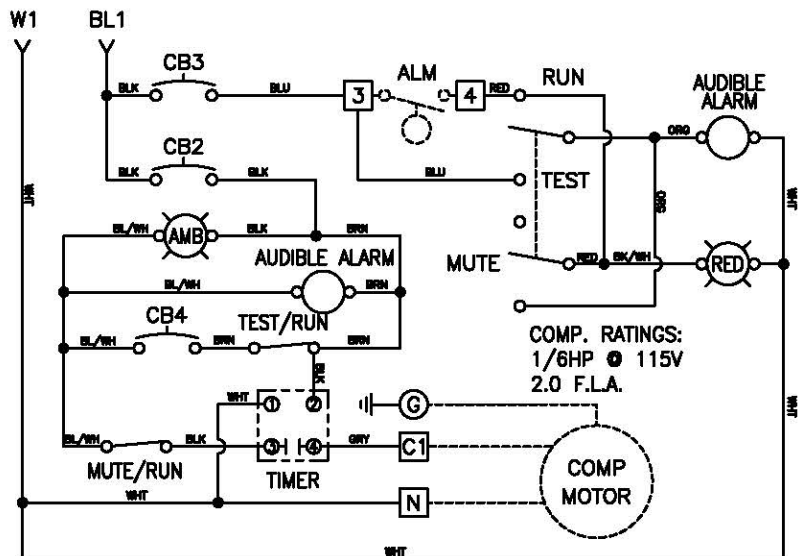


Wiring Schematic

PUMP/COMPRESSOR POWER CIRCUIT
115V - 1PH



NOTE: BOTH MOTORS MUST HAVE INTERNAL OVERLOAD PROTECTION.



COMP. RATINGS:
1/6HP @ 115V
2.0 F.L.A.