

**Observer 500 Indoor/Outdoor Alarm**

<b>⚠ WARNING</b>	<b>ELECTRICAL SHOCK HAZARD</b> Disconnect power before installing or servicing this product. A qualified service person must install and service this product according to applicable electrical and plumbing codes.	<b>⚠ WARNING</b>	<b>EXPLOSION OR FIRE HAZARD</b> Do not use this product with flammable liquids. Do not install in hazardous locations as defined by National Electrical Code, ANSI/NFPA 70.
------------------	---	------------------	--

1. Observe National Electric Code, ANSI/NFPA 70, when installing this unit to prevent moisture buildup. SPI is not responsible for damage or injury resulting from improper installation procedure.
2. Turn off power.
3. Open the enclosure lid. Loosen the 4 screws.
4. Mount the alarm using the mounting feet at the top and bottom.
5. String the alarm float cord through the cord grip at the bottom of the enclosure
6. Strip the alarm float switch as recommended in figure 1.
7. Attach the float leads to the terminal block at position 1 and 2. **CAUTION:** The float switch on this alarm is part of a 115 VAC circuit.
8. Close the enclosure lid and screw it tight.
9. Tighten the alarm float cord grip and check that the power cord grip is tight as well.
10. Plug in the alarm power cord. **NOTE:** SPI recommends using an outlet that is on a separate circuit from the pump power supply. This way, a fault in the pump circuit does not affect power to the alarm circuit.
11. Turn on power and test the alarm. Upon tilting the float switch up, the buzzer and alarm light should switch on. If it does not, push the toggle switch into “test”. If the alarm is still not functioning, contact your sales representative.

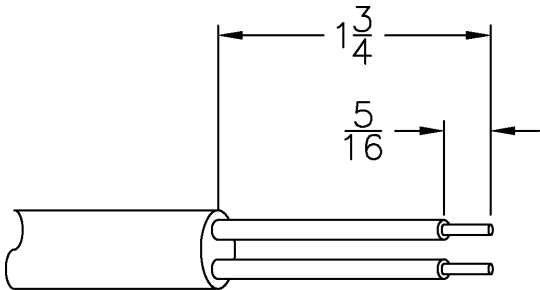


Figure 1: Recommended strip lengths

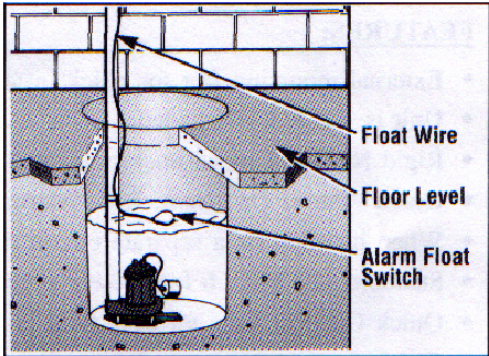
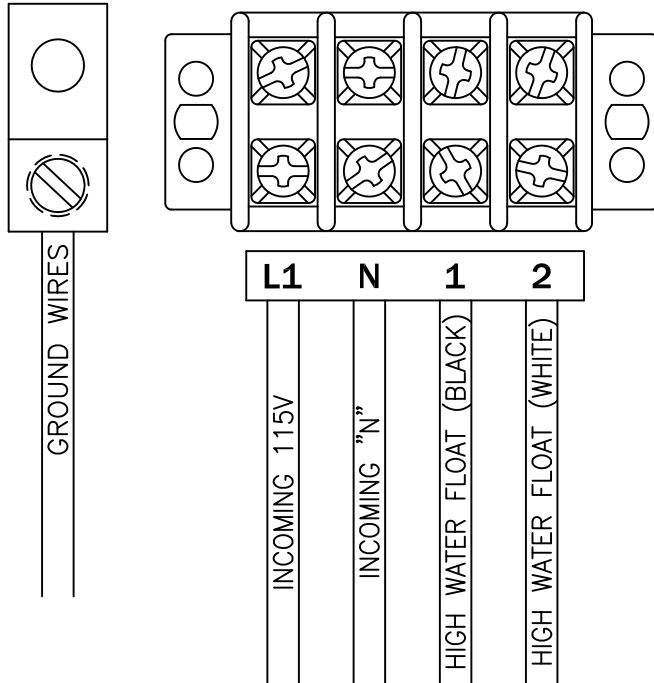


Figure 2: General tank setup

REQUIRED TORQUE FOR TERMINAL BLOCK SCREWS IS 9 in-lbs.



ALL INFORMATION CONTAINED IN THIS DRAWING IS  
CONFIDENTIAL AND PROPRIETARY TO SEPTIC PRODUCTS, INC.



CHANGES		TOLERANCES	DRAWN BY	DATE
F		DECIMALS .XXX = ±.005 .XX = ±.010 FRACTIONAL X/X = ±.1/64 ANGLES X° = ±1/2°	C. BARRICK	1/18/18
E			MATERIAL SPECIFICATION:  AS NOTED	
D				
C				
B				
A				
			SCALE:	PART NO.
			FULL	