

TIGHTENING TORQUE FOR TERMINAL BLOCK IS 9 in-lbs.

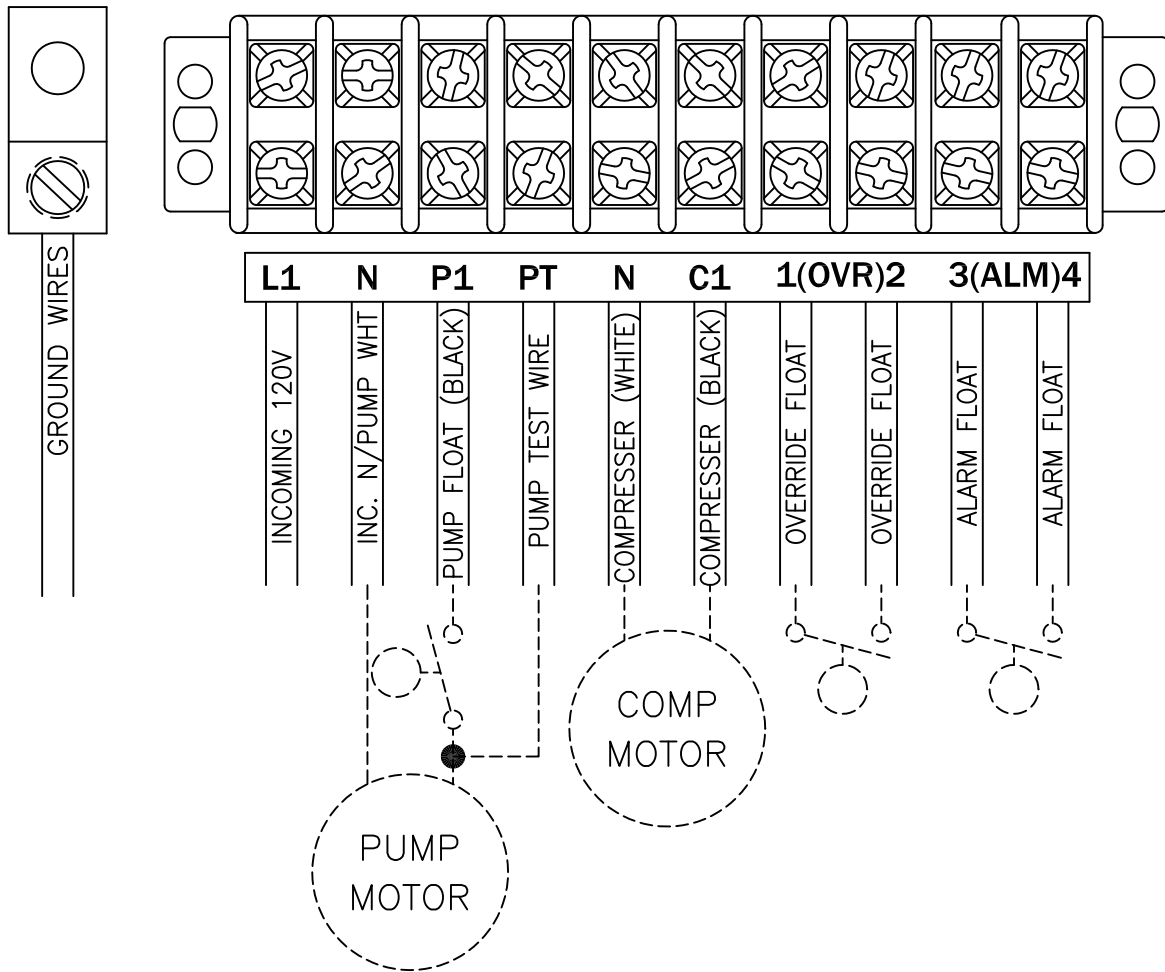
MODEL NO.

AAV-PT

PAGE

1

# CONNECTION DIAGRAM



ALL INFORMATION CONTAINED IN THIS DRAWING IS  
CONFIDENTIAL AND PROPRIETARY TO SEPTIC PRODUCTS INC.



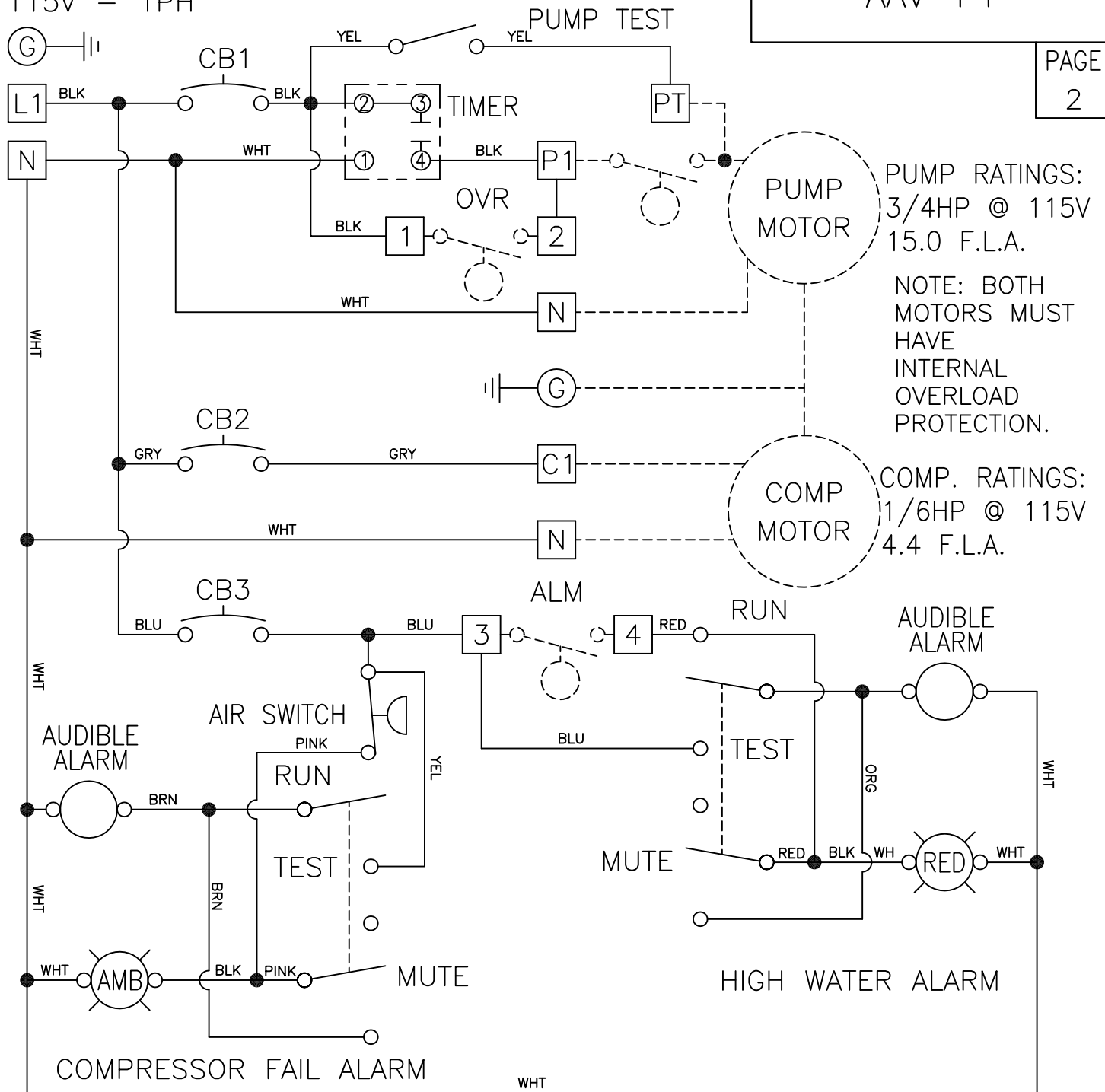
CHANGES	TOLERANCES	DRAWN BY	DATE	POWER CONNECTION DIAGRAM	
F	DECIMALS .XXX = ±.005 .XX = ±.010 FRACTIONAL X/X = ±.1/64 ANGLES X° = ±1/2°	D. MIDDLETON	10/22/07	SCALE:	PART NO.
E		MATERIAL SPECIFICATION:  AS NOTED		FULL	50B138
D					
C					
B					
A					

PUMP/COMPRESSOR POWER CIRCUIT  
115V - 1PH

MODEL NO.

AAV-PT

PAGE  
2



NOTES: MAIN PANEL DISCONNECT MUST BE PROVIDED BY INSTALLER.  
DASHED LINES INDICATE ITEMS NOT CONTAINED IN THE PANEL.  
FIELD WIRING MUST BE A MINIMUM OF 60°C COPPER WIRE.  
REQUIRED TORQUE FOR TERMINAL BLOCK SCREWS IS 9 in.-lbs.  
ALL INFORMATION CONTAINED IN THIS DRAWING IS  
CONFIDENTIAL AND PROPRIETARY TO SEPTIC PRODUCTS, INC.



CHANGES	TOLERANCES	DRAWN BY	DATE
F	DECIMALS	D. MIDDLETON	03/05/08
E	.XXX = ±.005	MATERIAL SPECIFICATION:  AS NOTED	
D	.XX = ±.010		
C	FRACTIONAL		
B	X/X = ±.1/64		
A	ANGLES X° = ±1/2°		

SCHEMATIC, ELECTRICAL W/TIMER & AIR SWITCH	
SCALE:	PART NO.
FULL	50B138