

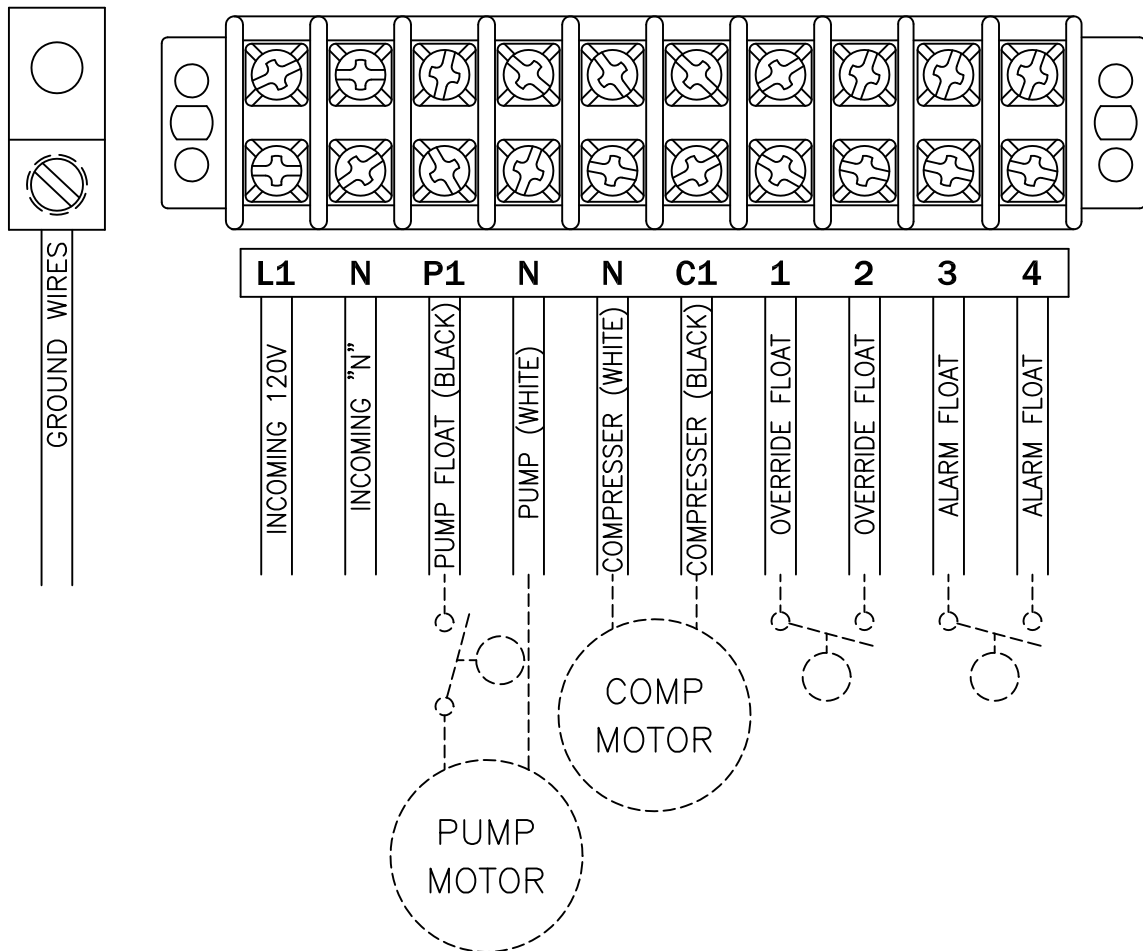
TIGHTENING TORQUE FOR TERMINAL BLOCK IS 9 in-lbs.

MODEL NO.

CAV

PAGE
1

CONNECTION DIAGRAM



ALL INFORMATION CONTAINED IN THIS DRAWING IS
CONFIDENTIAL AND PROPRIETARY TO SEPTIC PRODUCTS INC.



CHANGES	TOLERANCES	DRAWN BY	DATE
F	DECIMALS .xxx = ±.005 .xx = ±.010 FRACTIONAL x/x = ±.1/64 ANGLES x' = ±1/2"	D. MIDDLETON	5/20/04
E		MATERIAL SPECIFICATION: AS NOTED	
D			
C			
B			
A			

POWER CONNECTION DIAGRAM

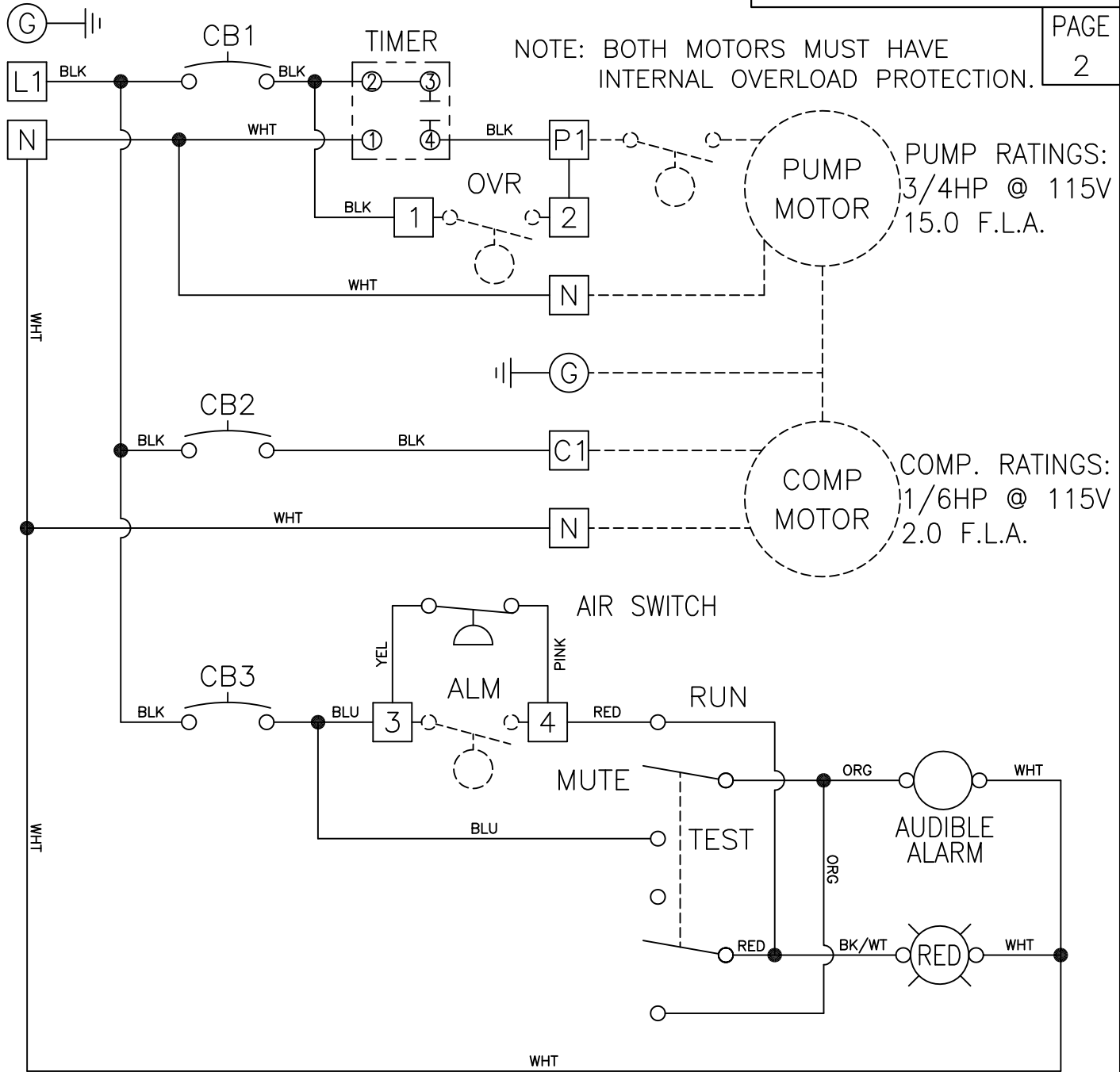
SCALE:	PART NO.
FULL	50B109

PUMP/COMPRESSOR POWER CIRCUIT
115V - 1PH

MODEL NO. CAV

PAGE 2

NOTE: BOTH MOTORS MUST HAVE INTERNAL OVERLOAD PROTECTION.



NOTES: MAIN PANEL DISCONNECT MUST BE PROVIDED BY INSTALLER.
DASHED LINES INDICATE ITEMS NOT CONTAINED IN THE PANEL.
FIELD WIRING MUST BE A MINIMUM OF 60°C COPPER WIRE.
REQUIRED TORQUE FOR TERMINAL BLOCK SCREWS IS 9 in-lbs.
ALL INFORMATION CONTAINED IN THIS DRAWING IS
CONFIDENTIAL AND PROPRIETARY TO SEPTIC PRODUCTS, INC.



CHANGES	TOLERANCES	DRAWN BY	DATE	SCHEMATIC, ELECTRICAL W/TIMER & AIR SWITCH	
F	DECIMALS .XXX = ±.005 .XX = ±.010	D. MIDDLETON	06/20/04		
E	FRACTIONAL X/X = ±.1/64	MATERIAL SPECIFICATION: AS NOTED		SCALE: PART NO.	
D	ANGLES X° = ±1/2°			FULL	50B109
C					
B					
A					