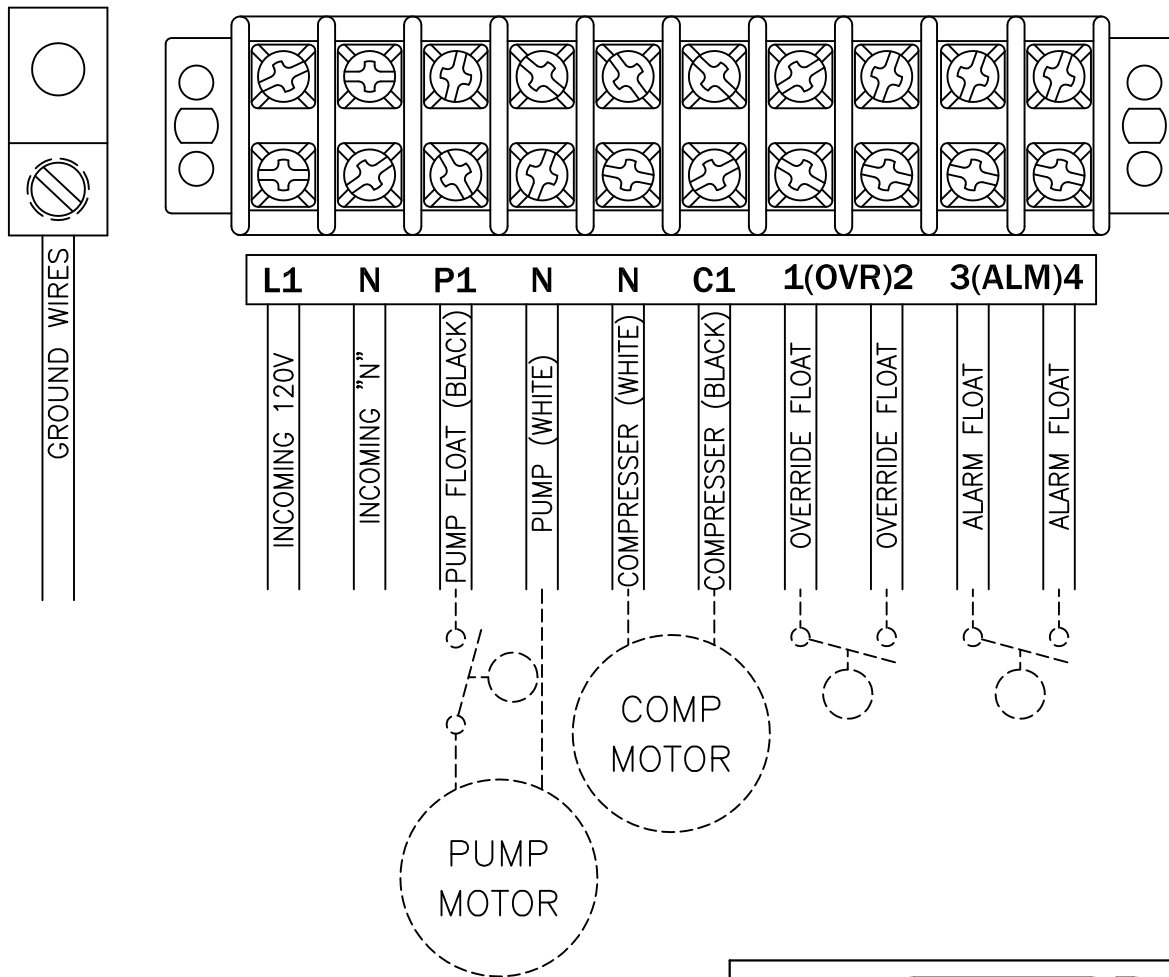


CONNECTION DIAGRAM

TIGHTENING TORQUE FOR TERMINAL BLOCK IS 9 in-lbs.



ALL INFORMATION CONTAINED IN THIS DRAWING IS
CONFIDENTIAL AND PROPRIETARY TO SEPTIC PRODUCTS INC.



| CHANGES | TOLERANCES | DRAWN BY | DATE | POWER CONNECTION DIAGRAM | |
|---------|---|---|---------|-----------------------------|----------|
| F | DECIMALS .XXX = ±.005 .XX = ±.010 FRACTIONAL X/X = ±.1/64 ANGLES X° = ±1/2° | D. MIDDLETON | 5/20/04 | SCALE: | PART NO. |
| E | | MATERIAL SPECIFICATION: AS NOTED | | FULL | 50B009 |
| D | | | | | |
| C | | | | | |
| B | | | | | |
| A | | | | | |

PUMP/COMPRESSER POWER CIRCUIT
115V - 1PH

MODEL NO.

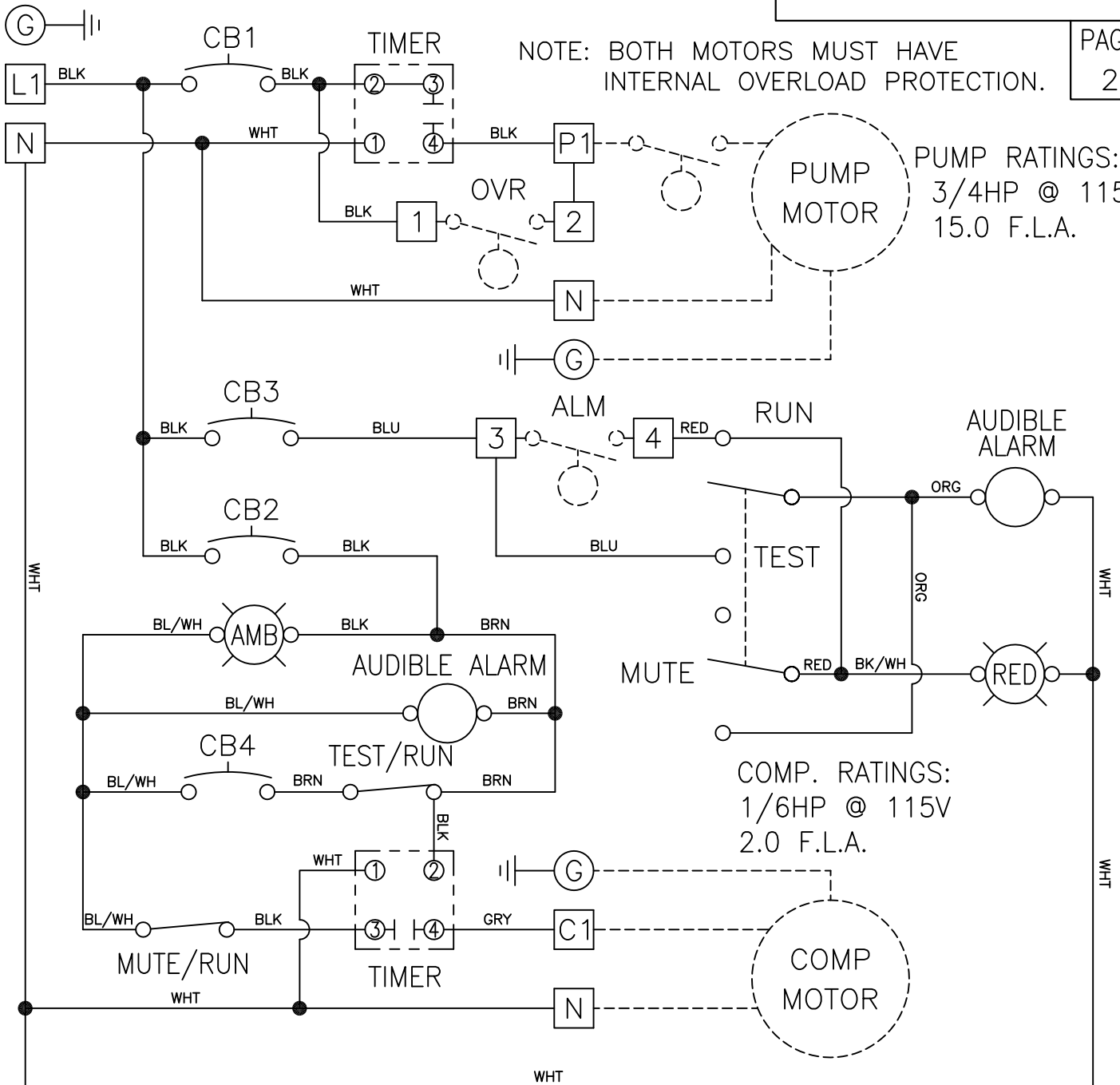
SN-2T

PAGE
2

NOTE: BOTH MOTORS MUST HAVE
INTERNAL OVERLOAD PROTECTION.

PUMP RATINGS:
3/4HP @ 115V
15.0 F.L.A.

COMP. RATINGS:
1/6HP @ 115V
2.0 F.L.A.



NOTES: MAIN PANEL DISCONNECT MUST BE PROVIDED BY INSTALLER.
DASHED LINES INDICATE ITEMS NOT CONTAINED IN THE PANEL.
FIELD WIRING MUST BE A MINIMUM OF 60°C COPPER WIRE.
REQUIRED TORQUE FOR TERMINAL BLOCK SCREWS IS 9 in-lbs.

ALL INFORMATION CONTAINED IN THIS DRAWING IS
CONFIDENTIAL AND PROPRIETARY TO SEPTIC PRODUCTS, INC.



| CHANGES | TOLERANCES | DRAWN BY | DATE | SCHEMATIC, ELECTRICAL | |
|---------|--------------|---|----------|--------------------------------|--|
| F | DECIMALS | D. MIDDLETON | 06/20/04 | SCALE: PART NO. FULL 50B009 | |
| E | .XXX = ±.005 | MATERIAL SPECIFICATION: AS NOTED | | | |
| D | .XX = ±.010 | | | | |
| C | FRACTIONAL | | | | |
| B | X/X = ±.1/64 | | | | |
| A | ANGLES | | | | |
| | X' = ±1/2' | | | | |